

FOR ALL YOUR STORM & SANITARY NEEDS



PH: (239) 482-7468
 FX: (239) 482-7469

COASTAL PRECAST
of Florida

P.O. BOX 370
 ESTERO, FL. 33928

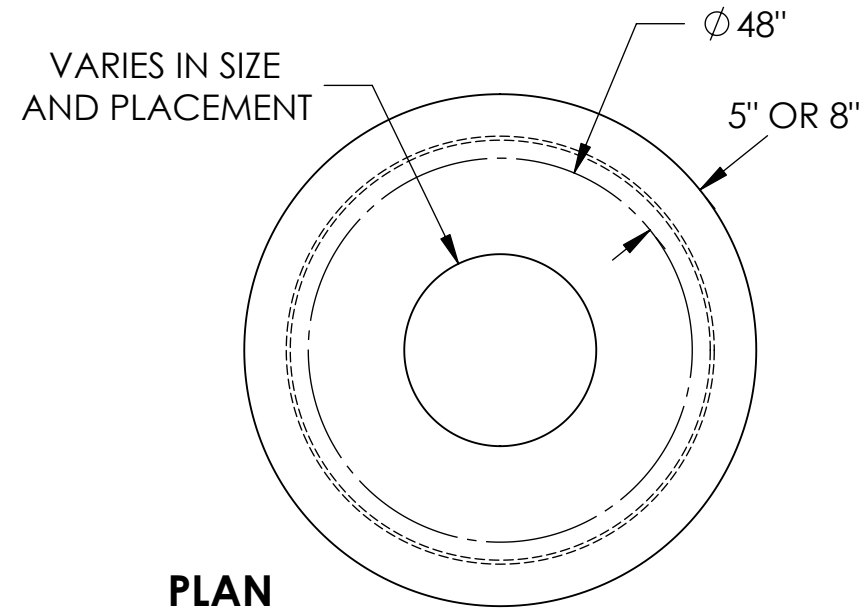
NOTES

CONCRETE SPECS

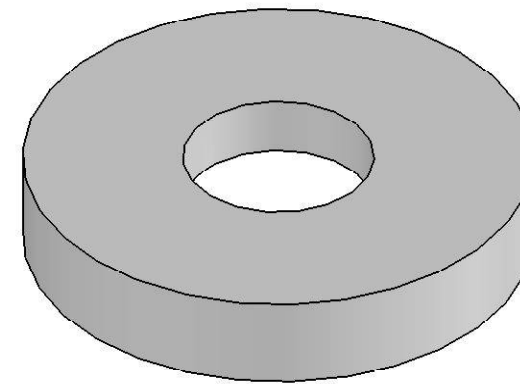
4,000 PSI @ 28 DAYS
 TYPE II CEMENT
 REF. ASTM-C 478

STANDARDS

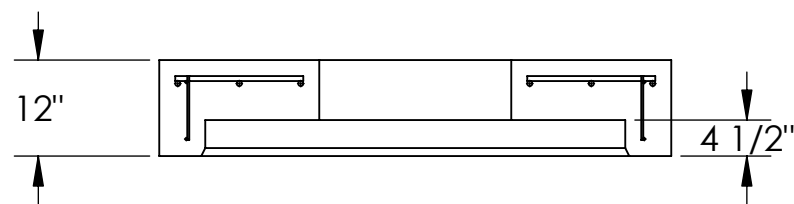
5" OR 8" WALLS



PLAN



ISOMETRIC



SECTION

STR. HEIGHT	WEIGHT 5" WALLS	WEIGHT 8" WALLS
12"	1612 LBS.	2212 LBS.

**4' DIA.
 MANHOLE
 12" FLAT-TOP
 BOX TYPE**