

FOR ALL YOUR STORM & SANITARY NEEDS



PH: (239)482-7468

FX: (239)482-7469

COASTAL PRECAST
of Florida

P.O. BOX 370
ESTERO, FL. 33928

NOTES

CONCRETE SPECS

4,000 PSI @ 28 DAYS

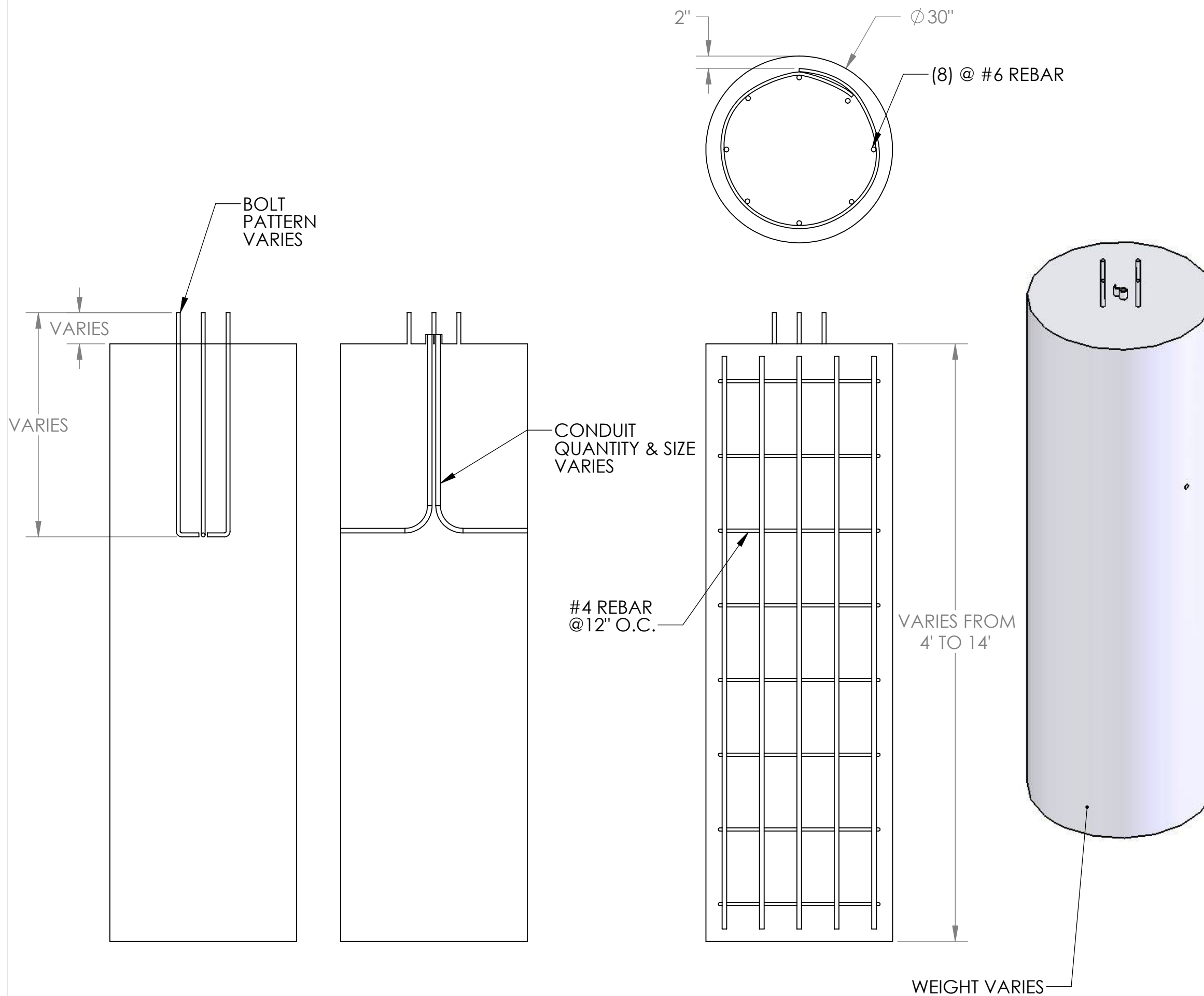
TYPE II CEMENT

REINF. REF. FDOT INDEX

STANDARDS

HORIZONTAL #4 REBAR @ 12" O.C.

VERTICAL 8 @ #6 REBAR



30" DIA. LAMP POST FOUNDATION