

FOR ALL YOUR STORM & SANITARY NEEDS



PH: (239)482-7468
FX: (239)482-7469

COASTAL PRECAST
of Florida

P.O. BOX 370
ESTERO, FL. 33928

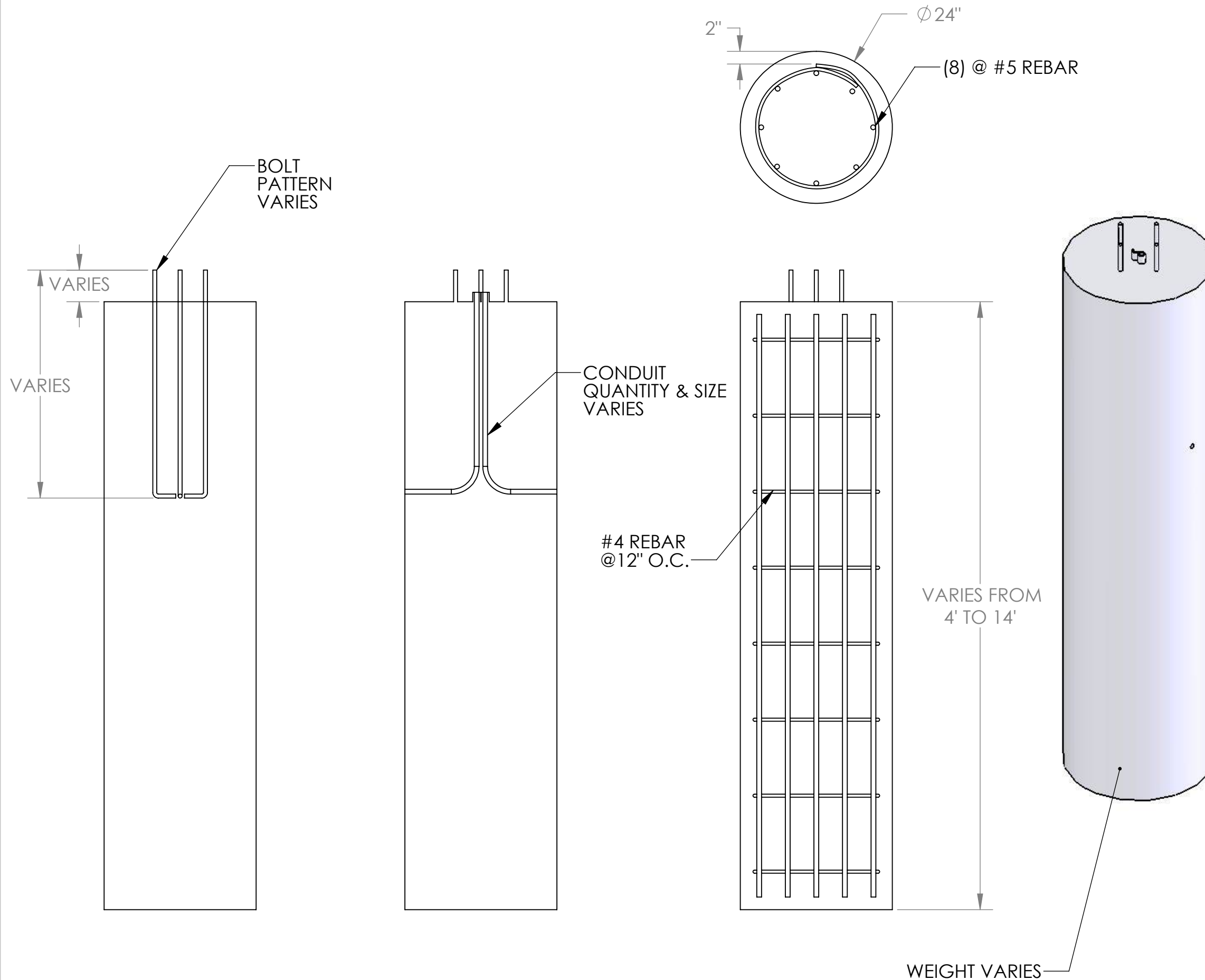
NOTES

CONCRETE SPECS

4,000 PSI @ 28 DAYS
TYPE II CEMENT
REINF. REF. FDOT INDEX

STANDARDS

HORIZONTAL #4 REBAR @ 12" O.C.
VERTICAL 8 @ #5 REBAR



**24" DIA. LAMP POST
FOUNDATION**